

Basic Use of Cirris CTLWIN Software

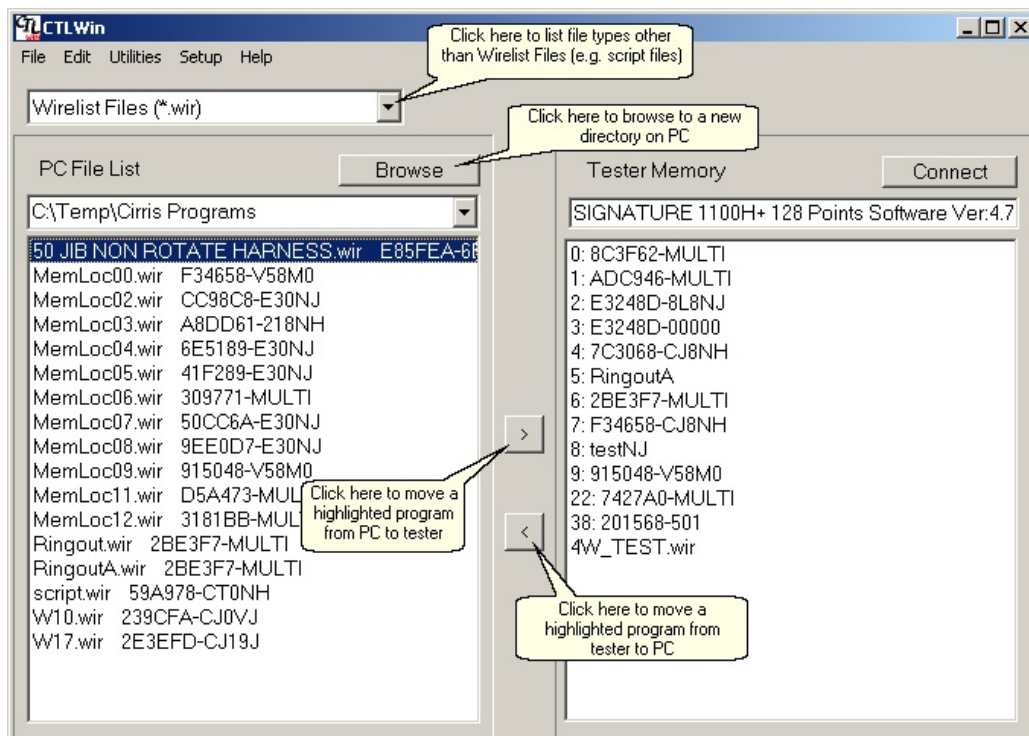
(Note: The CTLWIN software will communicate with the 1100R+, 1100H+ also with 1000H+, 1000R+, 1000HN and 1000RX testers equipped with a serial port.)

Setup:

1. Install the CTLWIN software on a PC running Microsoft Windows XP (Home or Professional) or Vista (Business or Ultimate) operating system.
2. Connect the PC with the Cirris tester using the serial cable provided with the tester. The serial cable is wired one-to-one with 9-position D-Sub connectors on both ends – a male connector to mate with the serial port on the tester and a female connector to mate with the serial port on the PC. *Please note, a null modem cable cannot be used as it is not wired one-to-one.* If the PC does not have a serial port, a USB to Serial adapter may be used. Cirris stocks a Keyspan adapter that is known to work in this application.
3. Once the connections are made, turn on the Cirris tester and wait for it to boot up to its start menu.
4. Open the CTLWIN software on the PC. When the software opens, it will attempt to communicate with the tester. When communication has been established, the tester will display the message, "**REMOTE.**" The CTLWIN window will be divided into two separate panes. The right pane will display the model of the connected tester, its number of test points and firmware version. It will also include a list of the programs in the tester's memory. The left pane will display the directory on the PC's hard drive to which the software has been pointed and a list of the test programs in the specified directory.

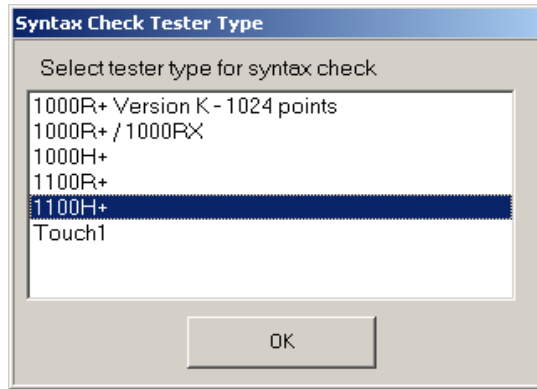
Basic Operation:

1. To open a directory on the PC's hard drive other than that shown, use the **BROWSE** button to select another directory path. Once the directory has been selected, it will be included in the list of folders available in the directory Drop Down List.
2. To transfer a program from the tester to the PC, highlight the program on the right pane of the CTLWIN display and click on the arrow between the two panes pointing towards the list of files on the PC.
3. To transfer a program from the PC to the tester, highlight the program on the left pane of the CTLWIN display and click on the arrow between the two panes pointing towards the list of files in the tester's memory.

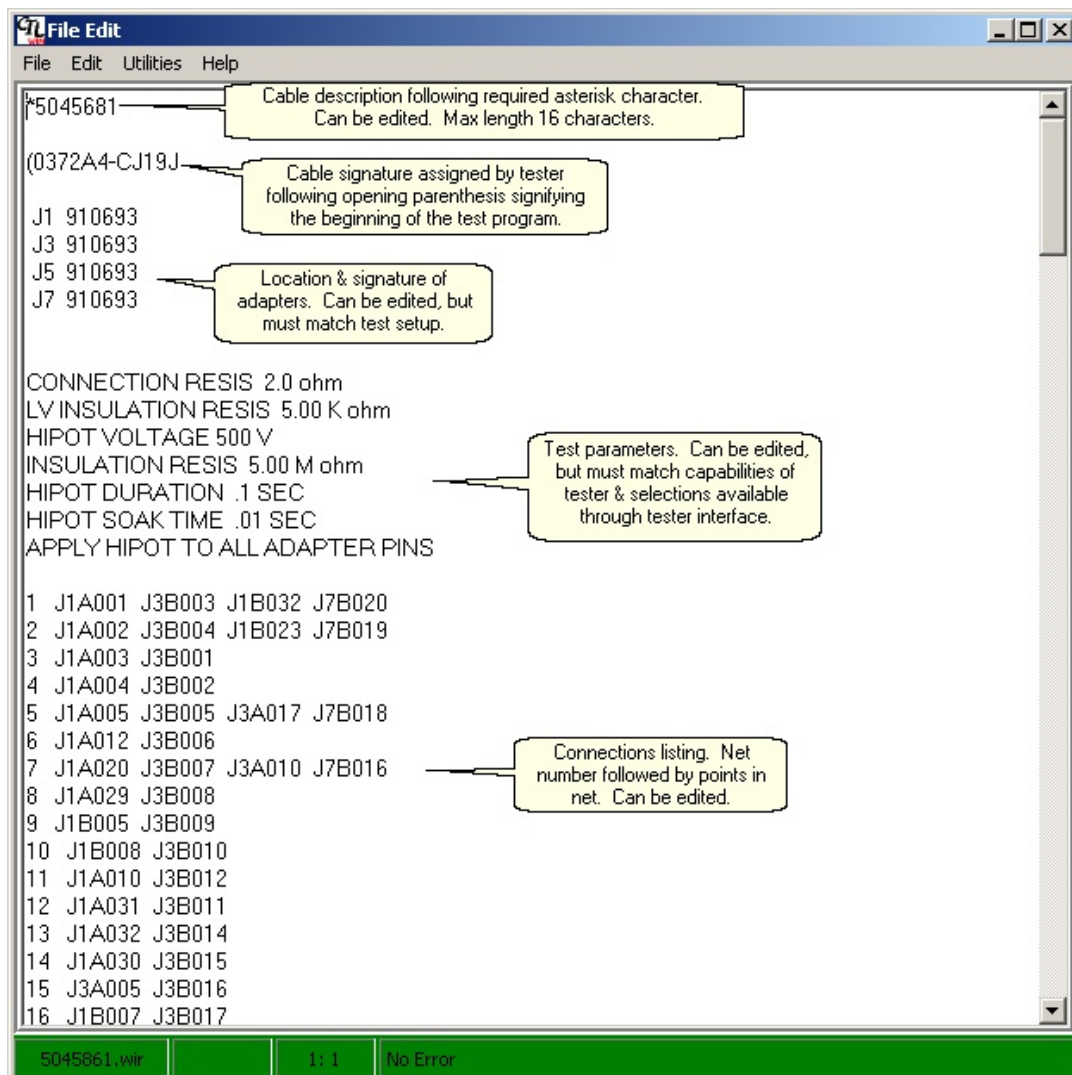


Basic Wirelist Editing:

1. Open a program that is located on the PC hard drive by double clicking on the name of the Wirelist in the list of files.
2. You will be asked to choose the model of the tester for which the program is intended. The software needs to know this information in order to apply the appropriate syntax check.



3. After selecting the tester type and selecting **OK**, the File Edit window will open.



4. Editing – Adding a test program description

A test program description can be added to the first line of the Wirelist file. The proper syntax is the asterisk character "*" followed by the test program description with no spaces. The maximum allowable length is sixteen characters. The program description is referenced by the 1100 and Touch1 testers when loading a test program from tester memory.

5. Editing - Adding a LABELS section:

CTLWIN is commonly used to add a LABELS section to a Wirelist. The descriptions used by the tester to identify test points are determined by the adapters being used. If the default descriptions are not adequate, adding a LABELS section will convert the default descriptions to labels that use preferred terminology. The Label section of the program is a simple listing that associates the default point identifications with their preferred labels and allows errors to be reported in terminology that makes the most sense to test operators.

Rules for labels:

- The proper syntax for a label is the default description follow by a space, the equals "=" sign, a space and finally the label.
- Labels can include only the characters A-Z, a-z, 0-9, "_" (underscore), "." (period), "-" (hyphen) and "," (comma). No spaces are allowed.
- Custom labels starting with the letter "J" are not allowed. Suggestion: Start the label with an underscore "_" (e.g. "_J-1").
- It's not necessary to include labels for all pins in each adapter. However, if an error occurs to a pin without a custom label, the default label will be used in the error description.
- The Maximum label length for the 1000R+ and the 1000RX is 6 characters. The maximum label length for the 1100R+ and 1100H+ is 16 characters. The Maximum label length for the Touch1 is 32 characters.

```

8 J1A009 J1B009
9 J1A006 J1B006
10 J1A016 J1B016
11 J1A015 J1A019 J1B015 J1B019
LABELS
J1A001 = P1-A
J1A002 = P1-B
J1A003 = P1-C
J1A004 = P1-D
J1A005 = P1-E
J1A006 = P1-F
J1A009 = P1-J
J1A012 = P1-M
J1A014 = P1-P
J1A015 = P1-R
J1A016 = P1-S
J1A019 = P1-Backshell
J1B001 = P2-A
J1B002 = P2-B
J1B003 = P2-C
J1B004 = P2-D
J1B005 = P2-E
J1B006 = P2-F
J1B009 = P2-J
J1B012 = P2-M
J1B014 = P2-P
J1B015 = P2-R_ShieldCarry
J1B016 = P2-S
J1B019 = P2-Backshell
)

```

- When editing is complete, save the file by selecting "File" from the Menu Bar and then "Save" or "Save As" from the menu command list. The software will perform a syntax check before saving the file. To perform a syntax check without saving the file, select "Utilities" from the Menu Bar and then "Syntax Check" from the menu command list.

